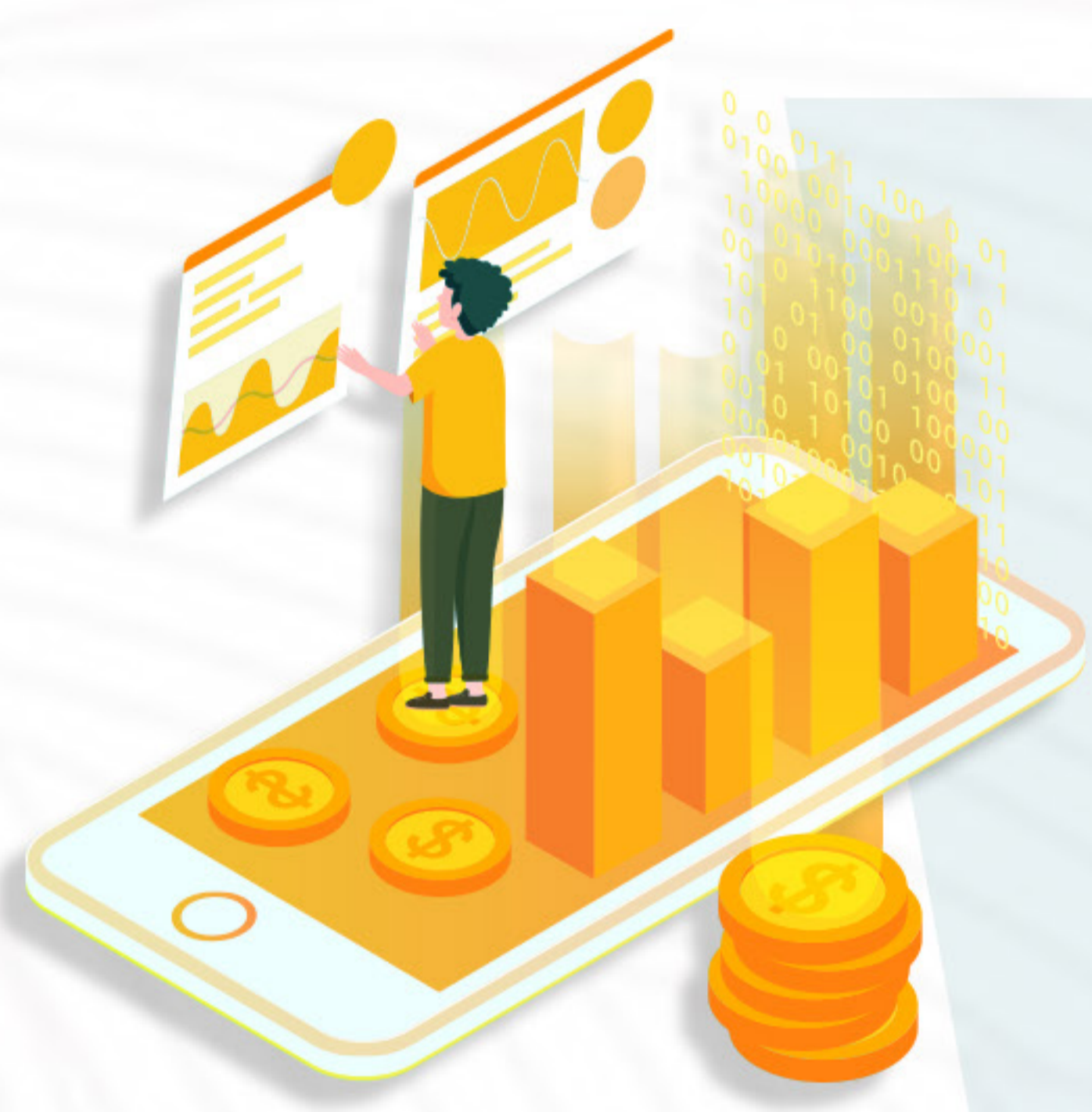


CHOOSE CWG for stock CFD trading

MARGIN TRADING

Margin trading, margin = price * contract amount * margin ratio
For example, the current price of Tesla TSLA is 540, the margin ratio of contract volume 10 is 0.1, and the margin calculation is as follows:
 $540 * 10 * 0.1 = 540 \text{USD}$



LEVERAGE TRADING

Leverage trading, you can choose the number of shares you want to buy or sell, just pay a part of the total transaction amount to open a position, and CWG will pay most of the remaining funds.



PRICE DIFFERENCE TRADING

Price difference trading, you can use the price difference contract to trade stocks, taking the rise and fall of stocks as the target. The CFD short-selling function of CWG stock makes the down market as good as the rise market!



STRICT REGULATION

Strict regulation. In the operation and management of CWG markets, we always strictly require ourselves with global regulatory regulations. CWG meets strict financial standards and regularly reports to our regulators as required.



CAPITAL SECURITY

Capital security, customer funds deposited in segregated bank, safe custody, safe deposit and withdrawal, rapid deposit and withdrawal, CWG markets has never failed to meet!

| SYMBOL | DESCRIPTION | MIN LOT SIZE | MAX LOT SIZE | MARGIN RATE |
|--------------|--|--------------|--------------|-------------|
| AACTECH | AAC Technologies Holdings Inc | 1 | 1300 | 0.15 |
| ABC | Agricultural Bank Of China Ltd | 1 | 25800 | 0.15 |
| AIA | AIA Group Ltd | 1 | 1000 | 0.15 |
| ANHUIIC | Anhui Conch Cement Co Ltd | 1 | 1400 | 0.15 |
| ANTASPORTS | Anta Sports Products Ltd | 1 | 1100 | 0.15 |
| BABAG | Alibaba Group Holding Ltd | 1 | 300 | 0.15 |
| BABAH | Alibaba Health Information Tech Ltd | 1 | 5900 | 0.15 |
| BANKCOMM | Bank of Communications Co Ltd | 1 | 15500 | 0.15 |
| BEA | Bank of East Asia Ltd | 1 | 4500 | 0.15 |
| BOC | Bank of China Ltd | 1 | 25100 | 0.15 |
| BOCHK | BOC Hong Kong Holdings Ltd | 1 | 2900 | 0.15 |
| BUDWEISERAP | Budweiser Brewing Co APAC Ltd | 1 | 3400 | 0.25 |
| BYD | BYD Co Ltd | 1 | 1700 | 0.15 |
| CATHAY | Cathay Pacific Airways Ltd | 1 | 7700 | 0.15 |
| CCB | China Construction Bank Corp | 1 | 12400 | 0.15 |
| CCC | China Communications Construction Co Ltd | 1 | 14000 | 0.15 |
| CCITIC | China Citic Bank Corp Ltd | 1 | 18800 | 0.15 |
| CCOAL | China Coal Energy Co Ltd | 1 | 29300 | 0.15 |
| CEA | China Eastern Airlines Co | 1 | 21100 | 0.2 |
| CEG | China Evergrande Group | 1 | 4300 | 0.15 |
| CGNPOWER | CGN Power Co Ltd | 1 | 40200 | 0.15 |
| CGS | China Galaxy Securities Co Ltd | 1 | 19100 | 0.15 |
| CHINAGAS | China Gas Holdings Ltd | 1 | 2600 | 0.15 |
| CHINALIFE | China Life Insurance Co Ltd | 1 | 4100 | 0.15 |
| CHINAMOB | China Mobile Ltd | 1 | 1200 | 0.15 |
| CHONGQINRCB | Chongqing Rural Commercial Bank Co Ltd | 1 | 21700 | 0.2 |
| CITIC | CITIC Ltd | 1 | 8500 | 0.15 |
| CKASSET | CK Asset Holdings Ltd | 1 | 1500 | 0.15 |
| CKHUTCHI | CK Hutchison Holdings Ltd | 1 | 1100 | 0.15 |
| CKI | CK Infrastructure Holdings Ltd | 1 | 1400 | 0.15 |
| CLP | CLP Holdings Ltd | 1 | 900 | 0.15 |
| CNOOC | CNOOC Ltd | 1 | 6400 | 0.15 |
| CNTELECOM | China Telecom Corp Ltd | 1 | 25400 | 0.15 |
| COUNTYGARD | Country Garden Holdings Co Ltd | 1 | 7500 | 0.15 |
| CRAILCC | China Railway Construction Corp Ltd | 1 | 9500 | 0.15 |
| CRAILGRP | China Railway Group Ltd / CREC | 1 | 17700 | 0.15 |
| CRESBEER | China Resources Beer Holding Co Ltd | 1 | 2100 | 0.15 |
| CRESGAS | China Resources Gas Group Ltd | 1 | 1900 | 0.15 |
| CRESPWR | China Resources Power Holdings Co Ltd | 1 | 7500 | 0.15 |
| CSCFIN | CSC Financial Co Ltd | 1 | 12200 | 0.3 |
| CSOUTHAIR | China Southern Airlines Co Ltd | 1 | 17600 | 0.15 |
| CSPCPHARMA | CSPC Pharmaceutical Group Ltd | 1 | 4100 | 0.15 |
| CTOWER | China Tower Corp Ltd | 1 | 44400 | 0.25 |
| CVANKE | China Vanke Co Ltd | 1 | 2600 | 0.15 |
| DONGFENGDMOT | Dongfeng Motor Group Co Ltd | 1 | 13200 | 0.15 |
| ENNENERGY | ENN Energy Holdings Ltd | 1 | 900 | 0.15 |
| FOSUN | Fosun International Ltd | 1 | 7300 | 0.15 |
| GALAXYENT | Galaxy Entertainment Group Ltd | 1 | 1400 | 0.15 |
| GDH | Guangdong Investment Ltd | 1 | 5000 | 0.15 |
| GEELYAUTO | Geely Automobile Holdings Ltd | 1 | 5500 | 0.15 |
| GZHOUAUTO | Guangzhou Automobile Group / GAC | 1 | 9600 | 0.15 |
| HAIDILAO | HaiDiLao International Holding Ltd | 1 | 2500 | 0.3 |
| HANGLUNG | Hang Lung Properties Ltd | 1 | 4600 | 0.15 |
| HANGSENGBNK | Hang Seng Bank Ltd | 1 | 400 | 0.15 |
| HANSOPHAR | Hansoh Pharmaceutical Group Co Ltd | 1 | 3000 | 0.2 |
| HENDERSON | Henderson Land Development Co Ltd | 1 | 2100 | 0.15 |
| HENGAN | Hengan Intl Group Co Ltd | 1 | 1200 | 0.15 |
| HKCNGAS | Hong Kong & China Gas Co Ltd | 1 | 5200 | 0.15 |
| HKEX | Hong Kong Exchanges & Clearing Ltd | 1 | 200 | 0.15 |
| HKTTRUSTNL | HKT Trust And HKT Ltd | 1 | 6700 | 0.15 |
| HSBC | HSBC Holdings Plc | 1 | 1300 | 0.15 |
| HUANENGPWR | Huaneng Power International Inc | 1 | 23400 | 0.15 |
| ICBC | Ind and Comm Bank of China Ltd / ICBC | 1 | 14400 | 0.15 |
| KUNLUNENRG | Kunlun Energy Co Ltd | 1 | 12700 | 0.15 |
| LONGFOR | Longfor Group Holdings Ltd | 1 | 2200 | 0.15 |
| MEITUAN | Meituan Dianping - Class B | 1 | 800 | 0.3 |
| MENGNU | China Mengniu Dairy Co Ltd | 1 | 2600 | 0.15 |
| MTR | MTR Corp | 1 | 1700 | 0.15 |
| NEWWORLD | New World Development Co Ltd | 1 | 7800 | 0.15 |
| OVERSEAS | China Overseas Land & Investment Ltd | 1 | 2800 | 0.15 |
| PETROCHINA | PetroChina Co Ltd | 1 | 23000 | 0.15 |
| PICC | PICC Property & Casualty Co Ltd | 1 | 9200 | 0.15 |
| PINGAN | Ping An Insurance Group Co of China Ltd | 1 | 800 | 0.15 |
| POS | Postal Savings Bank Of China | 1 | 15400 | 0.15 |
| POWERASSET | Power Assets Holdings Ltd | 1 | 1400 | 0.15 |
| PPINSURANCE | People's Insurance Co Group of China Ltd | 1 | 27200 | 0.15 |
| RESLAND | China Resources Land Ltd | 1 | 2200 | 0.15 |
| SABDSCB | Sands China Ltd | 1 | 2000 | 0.15 |
| SHENHUAENRG | China Shenhua Energy Co Ltd | 1 | 5500 | 0.15 |
| SHENZHOU | Shenzhou International Group Ltd | 1 | 700 | 0.15 |
| SHIMAO | Shimao Property Holdings Ltd | 1 | 2900 | 0.15 |
| SHKPT | Sun Hung Kai Properties Ltd | 1 | 700 | 0.15 |
| SINOBIOPHAR | Sino Biopharmaceutical Ltd | 1 | 6800 | 0.15 |
| SINOLAND | Sino Land Co Ltd | 1 | 7300 | 0.15 |
| SINOPEC | China Petroleum & Chemical / Sinopec | 1 | 18900 | 0.15 |
| SUNAC | Sunac China Holdings Ltd | 1 | 1800 | 0.15 |
| SUNNYOPTIC | Sunny Optical Technology Co Ltd | 1 | 600 | 0.15 |
| SWIREPAC | Swire Pacific Ltd - Class A | 1 | 1100 | 0.15 |
| SWIREPROPE | Swire Properties Ltd | 1 | 3200 | 0.15 |
| TECHTRONIC | Techtronic Industries Co Ltd | 1 | 1100 | 0.15 |
| TENCENT | Tencent Holdings Ltd | 1 | 100 | 0.15 |
| TINGYI | Tingyi (Cayman Isln) Hldg Corp | 1 | 5400 | 0.15 |
| UNICOM | China Unicom Hong Kong Ltd | 1 | 11800 | 0.15 |
| WANTWANT | Want Want China Holdings Ltd | 1 | 12500 | 0.15 |
| WEICHAIPWR | Weichai Power Co Ltd | 1 | 5100 | 0.15 |
| WHARFHOLD | Wharf Holdings Ltd | 1 | 4100 | 0.3 |
| WHARFREIC | Wharf Real Estate Investment Co Ltd | 1 | 1900 | 0.3 |
| WHEELLOCK | Wheelock & Co Ltd | 1 | 1600 | 0.15 |
| WHGROUP | WH Group Ltd | 1 | 9900 | 0.15 |
| WUXIBIO | WuXi Biologics Cayman Inc | 1 | 700 | 0.15 |
| WYNN | Wynn Macau Ltd | 1 | 4600 | 0.15 |
| XIAOMI | Xiaomi Corp | 1 | 6200 | 0.15 |
| ZHONGSHENG | Zhongsheng Group Holdings | 1 | 2700 | 0.15 |

CURRENCY USD **DECIMAL PLACE** 2
CONTRACT SIZE 10 **TICKSIZE** 0.01

Trading Hours in GMT +3
HK Shares / Mon-Fri / Mon to Fri04:30-11:00
MAXIMUM lot size for HK Shares is based on order size is 80,000 USD Nominal
The maximum lot size for US and HK shares will be calculated periodically and updated to MT5 as share prices move.

Margin:Price*Volume*Margin Rate