

CHOOSE CWG

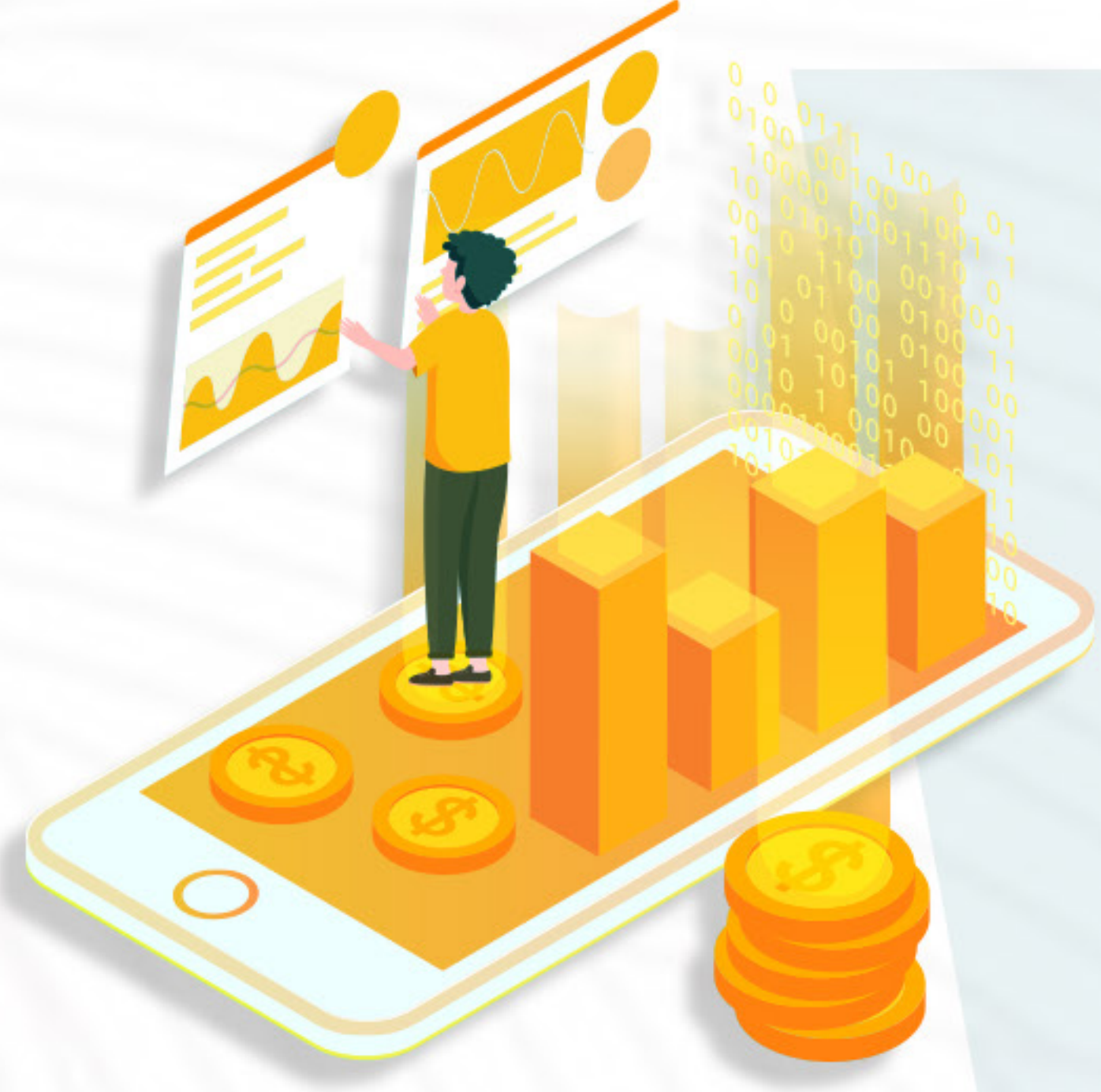
for stock CFD trading

MARGIN TRADING

Margin trading, margin = price * contract amount * margin ratio

For example, the current price of Tesla TSLA is 540, the margin ratio of contract volume 10 is 0.1, and the margin calculation is as follows:

$$540 * 10 * 0.1 = 540 \text{USD}$$



LEVERAGE TRADING

Leverage trading, you can choose the number of shares you want to buy or sell, just pay a part of the total transaction amount to open a position, and CWG will pay most of the remaining funds.



PRICE DIFFERENCE TRADING

Price difference trading, you can use the price difference contract to trade stocks, taking the rise and fall of stocks as the target. The CFD short-selling function of CWG stock makes the down market as good as the rise market!



STRICT REGULATION

Strict regulation. In the operation and management of CWG markets, we always strictly require ourselves with global regulatory regulations. CWG meets strict financial standards and regularly reports to our regulators as required.



CAPITAL SECURITY

Capital security, customer funds deposited in segregated bank, safe custody, safe deposit and withdrawal, rapid deposit and withdrawal, CWG markets has never failed to meet!

| SYMBOL | DESCRIPTION | MIN LOT SIZE | MAX LOT SIZE | MARGIN RATE |
|--------|------------------------------------|--------------|--------------|-------------|
| AAL | American Airlines Group Inc | 1 | 330 | 0.15 |
| AAPL | Apple Inc | 1 | 30 | 0.05 |
| ADBE | Adobe Inc | 1 | 20 | 0.05 |
| ADI | Analog Devices Inc | 1 | 80 | 0.15 |
| ADP | Automatic Data Processing Inc | 1 | 50 | 0.15 |
| ADSK | Autodesk Inc | 1 | 40 | 0.1 |
| AMAT | Applied Materials Inc | 1 | 150 | 0.05 |
| AMD | Advanced Micro Devices / AMD | 1 | 180 | 0.15 |
| AMGN | Amgen Inc | 1 | 40 | 0.05 |
| AMZN | Amazon.com Inc | 1 | 4 | 0.05 |
| ASML | ASML Holding NV (Nasdaq) | 1 | 30 | 0.1 |
| ATVI | Activision Blizzard Inc | 1 | 160 | 0.05 |
| AVGO | Broadcom Inc | 1 | 30 | 0.1 |
| BIDU | Baidu Inc (ADRs) | 1 | 70 | 0.3 |
| BIIB | Biogen Inc | 1 | 30 | 0.15 |
| BKNG | Booking Holdings Inc | 1 | 5 | 0.1 |
| CHTR | Charter Communications Inc | 1 | 10 | 0.2 |
| CMCSA | Comcast Corp | 1 | 220 | 0.05 |
| CME | CME Group Inc | 1 | 40 | 0.05 |
| COST | Costco Wholesale Corp | 1 | 30 | 0.05 |
| CSCO | Cisco Systems Inc | 1 | 200 | 0.05 |
| CTSH | Cognizant Tech Solutions - Class A | 1 | 140 | 0.05 |
| DISCK | Discovery Inc - Class C | 1 | 340 | 0.15 |
| EBAY | eBay Inc | 1 | 270 | 0.05 |
| EQIX | Equinix Inc | 1 | 10 | 0.15 |
| FB | Facebook Inc | 1 | 40 | 0.1 |
| FISV | Fiserv Inc | 1 | 80 | 0.05 |
| FOX | Fox Corp - Class B | 1 | 270 | 0.1 |
| GILD | Gilead Sciences Inc | 1 | 140 | 0.1 |
| GOOG | Alphabet Inc - C | 1 | 6 | 0.05 |
| GOOGL | Alphabet Inc - A | 1 | 6 | 0.05 |
| HBAN | Huntington Bancshares Inc | 1 | 710 | 0.15 |
| ILMN | Illumina Inc | 1 | 30 | 0.25 |
| INTC | Intel Corp | 1 | 140 | 0.05 |
| INTU | Intuit Inc | 1 | 30 | 0.05 |
| ISRG | Intuitive Surgical Inc | 1 | 10 | 0.05 |
| JD | JD.com Inc (ADRs) | 1 | 240 | 0.3 |
| KHC | Kraft Heinz Co | 1 | 330 | 0.05 |
| LBTYK | Liberty Global Plc - Class C | 1 | 490 | 0.15 |
| LRCX | Lam Research Corp | 1 | 30 | 0.05 |
| MAR | Marriott International - Class A | 1 | 60 | 0.1 |
| MDLZ | Mondelez International Inc | 1 | 160 | 0.15 |
| MNST | Monster Beverage Corp | 1 | 140 | 0.15 |
| MSFT | Microsoft Corp | 1 | 50 | 0.05 |
| MU | Micron Technology Inc | 1 | 170 | 0.1 |
| MYL | Mylan NV | 1 | 440 | 0.15 |
| NFLX | Netflix Inc | 1 | 20 | 0.1 |
| NTES | NetEase Inc (ADRs) | 1 | 20 | 0.1 |
| NVDA | NVIDIA Corp | 1 | 30 | 0.1 |
| NWS | News Corp - Class B | 1 | 690 | 0.15 |
| NXPI | NXP Semiconductors NV | 1 | 70 | 0.2 |
| PDD | Pinduoduo Inc (ADRs) | 1 | 270 | 0.2 |
| PEP | PepsiCo Inc | 1 | 60 | 0.1 |
| PYPL | PayPal Holdings Inc | 1 | 80 | 0.15 |
| QCOM | QUALCOMM Inc | 1 | 110 | 0.05 |
| REGN | Regeneron Pharmaceuticals | 1 | 20 | 0.2 |
| ROST | Ross Stores Inc | 1 | 80 | 0.05 |
| SBUX | Starbucks Corp | 1 | 110 | 0.05 |
| SIRI | Sirius XM Holdings Inc | 1 | 1390 | 0.1 |
| SYMC | NortonLifeLock Inc / Symantec | 1 | 480 | 0.05 |
| TEAM | Atlassian Corp Plc - Class A | 1 | 60 | 0.2 |
| TMUS | T-Mobile US Inc | 1 | 100 | 0.1 |
| TRIP | TripAdvisor Inc | 1 | 330 | 0.15 |
| TSLA | Tesla Inc | 1 | 10 | 0.1 |
| TXN | Texas Instruments Inc | 1 | 70 | 0.1 |
| VRTX | Vertex Pharmaceuticals Inc | 1 | 40 | 0.15 |

CURRENCY

USD

DECIMAL PLACE

2

CONTRACT SIZE

10

TICKSIZE

0.01

Trading Hours in GMT +3

US Shares / Mon-Fri/ Mon to Fri16:30-23:00

Maximum lot size for US Shares is based on order size is 100,000 USD Nominal

The maximum lot size for US and HK shares will be calculated periodically and updated to MT5 as share prices move.

Margin:Price*Volume*Margin Rate